

# OAHE DAM

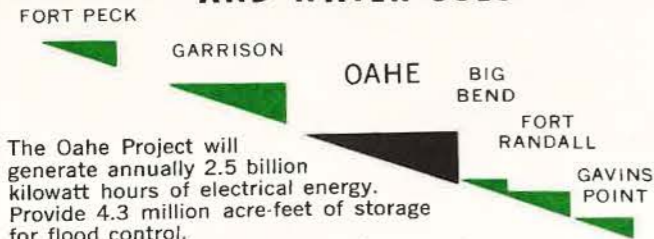
North Dakota-South Dakota

# OAHE RESERVOIR

North Dakota-South Dakota



## MISSOURI RIVER PROFILE AND WATER USES

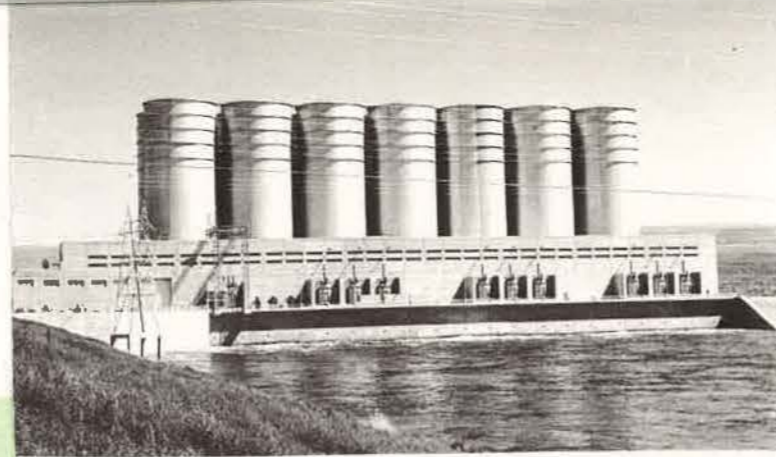


The Oahe Project will generate annually 2.5 billion kilowatt hours of electrical energy. Provide 4.3 million acre-feet of storage for flood control. Provide 13.8 million acre feet of storage for water conservation, irrigation and navigation. Provide more than 300,000 acres of water surface for recreational use by you and thousands of visitors.

## FLOOD CONTROL, IRRIGATION, NAVIGATION and POWER for the CITIES, FARMS and INDUSTRIES in the MISSOURI RIVER BASIN

### PROJECT STATISTICS

<b>THE DAM</b>	
Type	..... Rolled earth & shale berms
Height	..... 245 Feet
Length	..... 9,300 Feet
Width at top	..... 60 Feet
Maximum width at base	..... 3,500 feet
Volume of earth fill	..... 92,000,000 cubic yards
Volume of concrete (all structures)	..... 1,122,000 cubic yards
<b>THE SPILLWAY</b>	
Width	..... 456 Feet
No., Size & Type Gates	..... 8-50' by 23.5' tainter
Crest elevation	..... 1596.5 feet m.s.l.
<b>THE OUTLET WORKS</b>	
Number of Conduits	..... 6
Size	..... 19.75' diameter upstream; 18.25' downstream
Length	..... 3,496 to 3,659 feet
<b>THE POWER INSTALLATION</b>	
No. & Size of Conduits	..... 7 - 24' diameter
Length of Conduits	..... 3,280 to 4,005 feet
Surge Tanks	..... 2 per unit, 70' in diameter, 145' high
Generating capacity of each power unit	..... 85,000 kilowatts
Total installed capacity	..... 595,000 kilowatts
Power generation begun	..... April 1962
<b>THE RESERVOIR</b>	
Drainage area above the dam	..... 243,490 square miles
Storage capacity (maximum pool)	..... 23,600,000 acre feet
Water surface area at maximum pool	..... 376,000 acres
Length at maximum pool	..... 231 miles
Maximum depth	..... 200 feet
Shoreline length (available for recreation)	..... 2,250 miles



## POWER

The Oahe powerhouse is a massive concrete structure 670 feet long and over 150 feet high. It houses seven generating units with a total installed capacity of 595,000 kilowatts. In physical size the generators are among the world's largest.

## THE OLDEN DAYS



The history of the area around Oahe Dam and reservoir is replete with famous names and well known events. The first white men known to have visited this part of the Missouri Valley came from Quebec in about 1738. These French explorers visited the villages of the Mandan and Ree Indians.

**MULTIPLE BENEFITS** Oahe, the largest dam of its type in the world, has an important role in the development of the Missouri River Basin. Designed and constructed by the Army Corps of Engineers the huge reservoir behind Oahe Dam provides water for flood protection, irrigation, navigation, municipal water

supply, power development, fish and wildlife and recreation. The dam and reservoir were envisioned as a main stem unit on the Missouri in the "Pick-Sloan" plan which was authorized by Congress in the Flood Control Act of 1944. Construction was started in 1948 and power generation was achieved in 1962.



The Lewis and Clark party camped at several sites along the Missouri and a monument to Sakakawea stands today opposite the city of Mobridge.

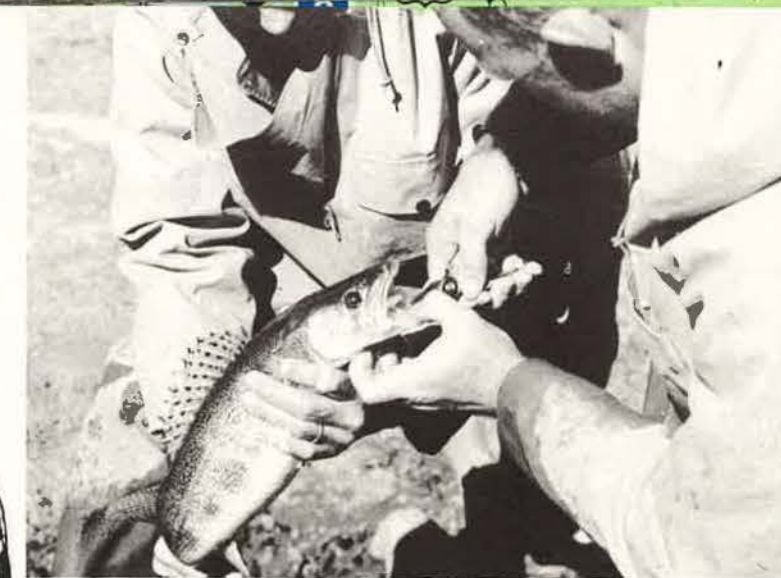
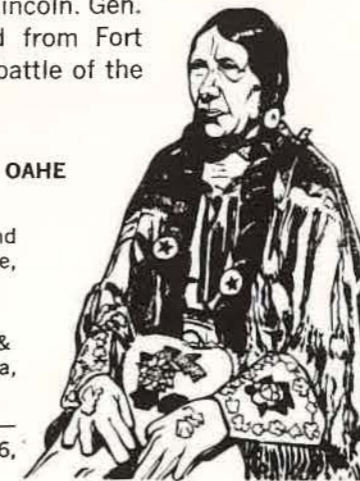
The Army played an important part in the early history of the area with the establishment of several forts along the river valley. The forts included Fort Sully, Fort Rice and Fort A. Lincoln. Gen. George A. Custer marched from Fort A. Lincoln to defeat at the battle of the Little Bighorn in Montana.

### Further information about the Oahe project can be obtained from:

Area Engineer, Oahe Dam and Reservoir, P. O. Box 196, Pierre, South Dakota.

U.S. Army Engineer District—Omaha, 6012 U.S. Post Office & Court House, Omaha, Nebraska, 68102

U.S. Army Engineer Division—Missouri River, P. O. Box 1216, Omaha, Nebraska, 68101



**FISHING** The waters above and below Oahe Dam are well known for fine fishing. Anglers from many states have traveled to the huge reservoir in search of a variety of sport fish. Fish common to the reservoir and tailwaters are shown on the reverse side of this pamphlet.

# CAMPING

Camping and picnicking sites have been planned and constructed at several places around and below Oahe Reservoir. The facilities available are outlined in the chart below. Boaters frequently "get away from it all" by choosing their own picnic ground from areas all along Oahe's 2250 miles of shoreline.



# BOATING

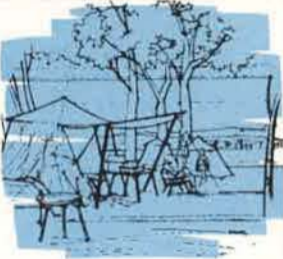
BOAT launching ramps have been provided at several points in the Oahe Reservoir Area. The ramps, of concrete and steel mesh construction, are generally located near public camping areas or picnic sites.

A safety cable is used at the West Shore boat ramp because of the depth of the reservoir.



# AQUATIC SPORTS

Aquatic sports including swimming and water skiing have become popular on Oahe Reservoir since the impoundment of water was started in 1958. There are designated swimming areas at Lake Pocasse and in the Downstream Area. "Play it safe."



Other public facilities available at Oahe Dam and Reservoir include picnic tables, electricity, shelter buildings, concession stands, sanitary buildings and fireplaces.

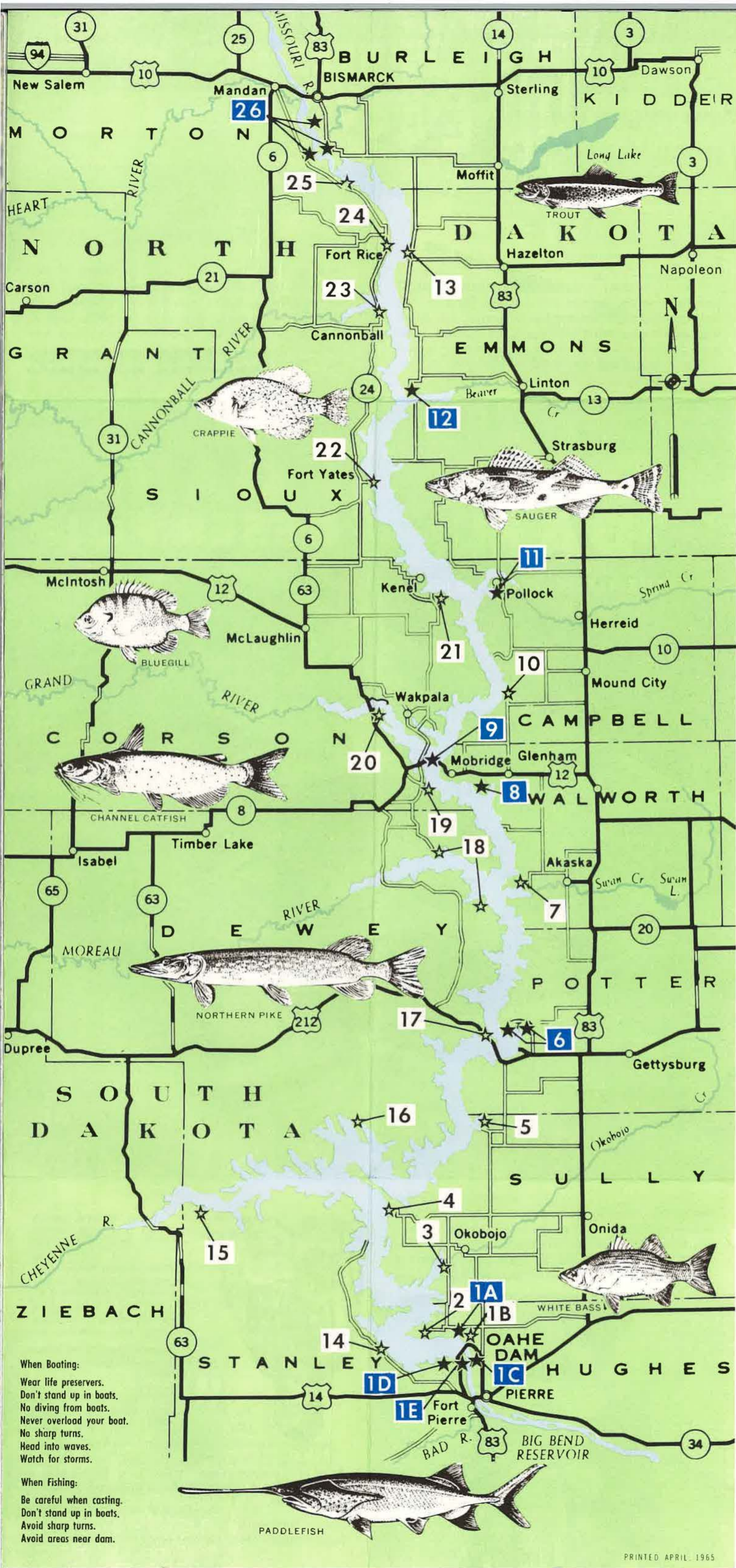
PUBLIC FACILITIES AVAILABLE AT OAHE

1A	EAST SHORE			★	★													★	☆	PIERRE	6	
1B	OVERLOOK																		★	☆	PIERRE	6
1C	TAILRACE	★	★		★	☆			☆	★									★	☆	PIERRE	6
1D	WEST SHORE		★																★	★	PIERRE	6
1E	DOWNSTREAM		★		★	★	★	★	★	★	★	☆	★	★	★	★			★	★	PIERRE	6
2	OAHE MISSION		★			★													★		PIERRE	19
3	OKOBOJO CREEK																		★		PIERRE	22
4	LITTLE BEND					☆	☆			☆									★		PIERRE	32
5	SUTTON BAY		☆		☆	☆			☆										★		GETTYSBURG	32
6	WHITLOCKS BAY		★		☆	☆			☆	☆		☆							★	☆	GETTYSBURG	14
7	SWAN CREEK		☆		☆	☆			☆	☆									★		SELBY	16
8	INDIAN CREEK		★		☆	☆	☆	☆	☆	☆		☆							★	☆	MOBRIDGE	4
9	INDIAN MEMORIAL		★	☆	★	☆												☆	★	☆	MOBRIDGE	3
10	LOCKE CREEK																		★		MOBRIDGE	19
11	LAKE POCASSE	★	★		★	★			★	★		★	★	★	★				★		POLLOCK	0
12	BEAVER CREEK		★		☆	☆			☆	☆									★	☆	LINTON	16
13	HAZELTON																		★		HAZELTON	12
14	CHANTIER CREEK																		★		PIERRE	16
15	CHEYENNE RIVER																		★		PIERRE	62
16	NO HEART BUTTE BAY																		★		GETTYSBURG	40
17	FOREST CITY				☆	☆			☆										★		GETTYSBURG	17
18	MOREAU RIVER																		★		MOBRIDGE	26
19	OLD BRIDGE																		★		MOBRIDGE	9
20	GRAND RIVER		☆																★		MOBRIDGE	14
21	KENEL																		★		MOBRIDGE	45
22	FORT YATES																		★		MANDAN	0
23	CANNONBALL																		★		MANDAN	50
24	FORT RICE																		★		MANDAN	24
25	HUFF VILLAGE																		★		MANDAN	16
26	SIBLEY ISLAND		☆		★	★		☆	★		☆		☆	★					★		BISMARCK	6

### LEGEND

- DEVELOPED AREAS
- FUTURE AREAS
- ★ EXISTING FACILITIES
- ☆ FUTURE FACILITIES

- BOAT DOCK
- BOAT RAMP
- BOAT RENTAL
- BOAT STORAGE
- TABLES
- PIT TOILETS
- FLUSH TOILETS
- SHOWERS
- WATER WELLS
- FIRE PLACES
- SWIMMING
- CHANGING HOUSE
- CAMPING
- CONCESSIONS
- FISHING
- PICNIC SHELTERS
- ELECTRICITY
- NEAREST LODGING
- MILES



When Boating:  
 Wear life preservers.  
 Don't stand up in boats.  
 No diving from boats.  
 Never overload your boat.  
 No sharp turns.  
 Head into waves.  
 Watch for storms.

When Fishing:  
 Be careful when casting.  
 Don't stand up in boats.  
 Avoid sharp turns.  
 Avoid areas near dam.